



SAUNA PRODUCTS AND ACCESSORIES

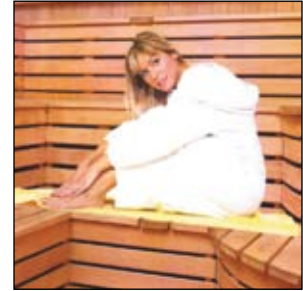
By STEAM SAUNA INC.

2010/2011 CATALOG AND PRICE LIST

www.steam-sauna.com
sales@steam-sauna.com
1-800-354-8462 1-800-387-0309
Lewiston, New York Toronto, Ontario

TABLE OF CONTENTS

Company Profile	1
Serena Cedar Sauna	2
Features	3
Components	4
Layouts	5
Serena Premium Pre-cut Cedar Sauna	
Features	6
Price List	6
Serena Executive Cedar Log Sauna	
Features	7
Price List	7
Assembly Instructions	8
Sauna Heaters	
Features	9
Price List	9
Sauna Control Package	
60 Min Mechanical Control	10
Advance Blue Designer Digital Control	10
Power Junction Box	10
24 HR/7 Day Digital Control	11
Accessories	12
Price List	14
Serena Far Infrared Sauna	
Features	15
Specifications	16
Terms and Conditions	17
Client Overview	18



COMPANY PROFILE



Steam Sauna Inc. has been providing top quality saunas and steam generators for virtually every commercial and residential application for over 40 years, and is ISO 9001:2008 Certified.

Our commitment to constant improvement and technological innovation has earned us satisfied and loyal customers but, most importantly, it has earned us satisfied end users.

Our range of saunas and steam products is specified by leading Architects and successfully used in prestigious projects such as hotels, resorts, universities, colleges, athletic and fitness clubs, golf and country clubs, health clubs, spas, condominiums and executive fitness rooms around the world. Our advanced technology also provides custom solutions for specialized applications like saunas of specific design with irregular shapes and sizes.

We provide ^cCSA_{us} approved U.L. listed sauna heaters. This assures consistent high quality and safety controls.

Steam Sauna Inc. offers design, fabrication and installation services for prefabricated custom-build Serena Executive cedar log sauna rooms. They are built using the finest Cedar with double T&G, and are quick and easy to assemble. No need for nails, studding, vapor barriers or insulation, minimal field installation work. And no carpentry required. We also provide premium and elite cedar sauna material kit "to do-it-yourself". Our Serena™ saunas bring an upper-level of luxury and convenience to your club or home.

We are an affiliate member of IHRSA, ISPA, TCA and a YMCA supplier nationwide.

Steam Sauna Inc. always recognizes, inspires and fulfills customers' desires; it evolves in developing the best solutions for customers, which are exemplary in its designs, functions, quality and service.

Steam Sauna Inc. uses the expertise, commitment and creativity of its employees as well as advanced and environmental technology to produce the best quality sauna and steam products for our customers; as a result Steam Sauna Inc. always stays ahead in the industry and is the most attractive sauna and steam products supplier in the world.

For more information on our products and services, please feel free to call us at 1-800-354-8462 (USA) or 1-800-387-0309 (Canada).

SERENA CEDAR SAUNA

Material offered:

Serena Sauna uses the highest selected grade of clear, kiln-dried, western red cedar. Western cedar is renowned for its high impermeability to liquids and natural phenol preservatives. This natural wood is ideally suited for exterior and interior use in extremely humid conditions. The cellular composition of cedar - millions of microscopic air-filled cells - provides superior insulating qualities. Cedar's rich colour and resistance to decay are due to its natural oils. This is why Serena Saunas are the best of their class and exceptionally durable.



Western Red cedar clear A+ better



1x4 T&G

WHICH SAUNA IS THE BEST CHOICE FOR YOU?

SERENA PREMIUM & ELITE PRE-CUT CEDAR SAUNA MATERIAL KIT

(Individual boards and components for converting an existing space into a sauna)
Serena premium pre-cut sauna room kit is designed to be installed as individual boards in a space that you have already framed, insulated and wired. The sauna door comes pre-fabricated. Upgrade to the Elite model with pre-fabricated benches, heater, heater guard, etc. Drawings prepared and approval taken.

The pre-cut sauna room is perfect for the person who:

- ◆ Has good woodworking skills and understands basic carpentry
- ◆ Likes doing the work themselves
- ◆ Wants less initial cost
- ◆ Is interested in a permanent application that is not portable
- ◆ Has an odd shaped space that would be difficult to pre-fabricate
- ◆ Is building a new home or remodeling an existing space

SERENA EXECUTIVE PRE-FABRICATED CEDAR LOG SAUNA

(Free standing modular sauna room)

The Serena Cedar log modular sauna room is pre-fabricated from finest grade A+ btr Western Red cedar 2 x 4 double T&G be used as free standing or lined in an existing enclosure. Set up anywhere without building mason walls and ceiling to save installation costs. Completely portable, can be dismantled and relocated when moving. Easy-to-assemble step-by-step Instructions with no carpentry required.

Ideal for the person who wants a sauna that is:

- ◆ Quick and easy to install and can be assembled in as little as 2-3 hours for the smaller units
- ◆ Portable, complete, finished inside and outside
- ◆ Inexpensive to set-up, simple construction
- ◆ Easily disassembled and carried if relocated



2x4 Double T&G

SERENA CEDAR SAUNA FEATURES

	Serena Premium Kit	Serena Elite Kit	Serena Executive Log Room
Wall	1x4 T&G Vertical/Horizontal Pre-cut	1x4 T&G Vertical/Horizontal Pre-cut	2x4 Double T&G Horizontal Pre-fabricated
Ceiling	1x4 T&G Parallel to Short Side Pre-cut	1x4 T&G Parallel to Short Side Pre-cut	2x4 Double T&G Pre-fabricated
Bench	2x4 S4S Pre-cut	2x4 S4S Pre-fabricated	2x4 S4S Pre-fabricated
Legs	2x4 S4S Materials	2x4 S4S Pre-fabricated	2x4 S4S Pre-fabricated
Heater Guard	2x4/1x4 S4S Pre-cut	2x4/1x4 S4S Pre-fabricated	2x4/1x4 S4S Pre-fabricated
Duck Board Floor	1x4/ S4S Materials	1x4 S4S Pre-fabricated	1x4 S4S Pre-fabricated
Door	2x4 Solid Cedar with Glass Window Pre-fabricated	2x4 Solid Cedar with Glass Window Pre-fabricated	2x4 Solid Cedar with Glass Window Pre-fabricated
Hardware	Vapor Barrier, Nails Screws, Louver, Vapor Proof Light	Vapor Barrier, Nails Screws, Louver, Vapor Proof Light	No carpentry work required at site
Option	Backrest, Headrest, Towel Hook, Bucket & Ladle, Thermometer, Hygrometer, Sand Timer, Sauna Sign, Wood Preservative		



SERENA CEDAR SAUNA COMPONENTS

Pre-Fabricated Door with Glass Window and Door Jamb



- Grade A+ btr Clear Western Red Cedar
- 2 x 4 Double Tongue & Groove, solid cedar door
- Standard Size:
26"Wx71.50"H
36"Wx80"H (ADA)

Bench



- Grade A+ btr clear Weston Red Cedar
- 2x4 Smooth finish all four sides
- Pre-Fabricated L Shape Step-up Benches

Heater Guard



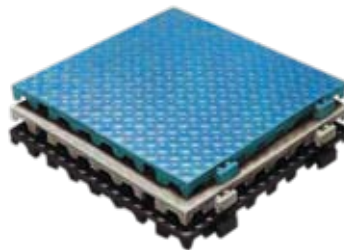
- Grade A+ btr Clear Western Red Cedar, kiln dried
- 2 x 3 / 1 x 4 Smooth finish all four sides

Pre-Fabricated Floor



- Removable Duck Board floor system to walking area of floor only
- Grade A+ btr clear Weston Red Cedar
- 1 x 4 S4S Top
- 1 x 4 S4S Bracing

Sauna Floor Modular Tiles



- | | |
|--------------|--------------|
| Construction | Vinyl (PVC) |
| Face Style | Solid top |
| Total Weight | 1.5 lbs/ft2 |
| Borders | Yes (add on) |
| Thickness | 3/4" |
| Sizes | 12" x 12" |

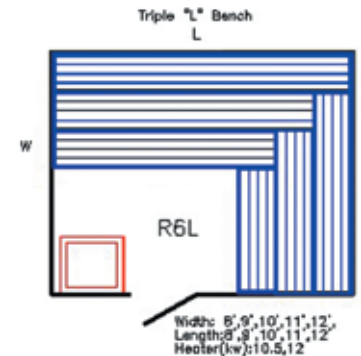
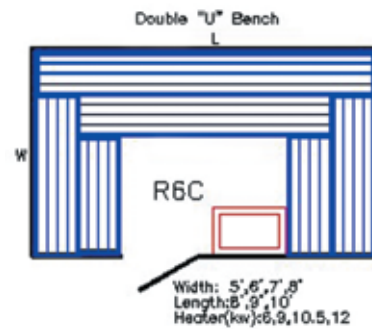
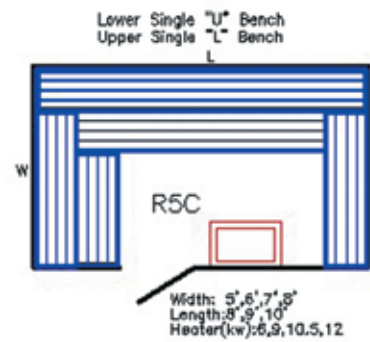
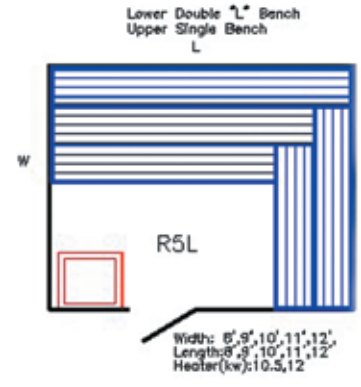
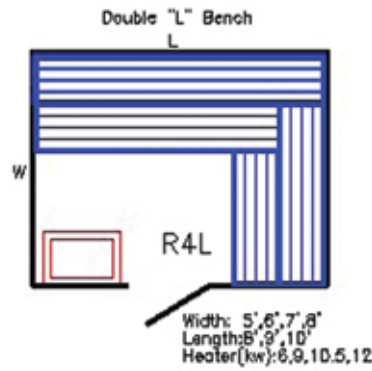
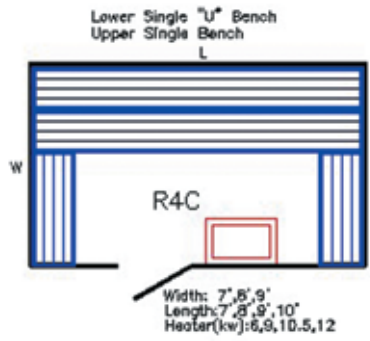
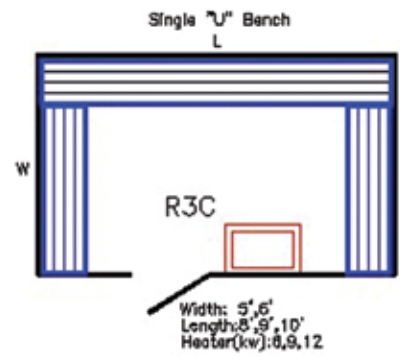
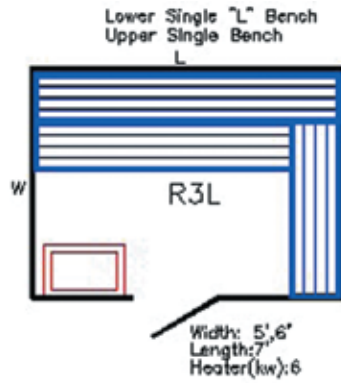
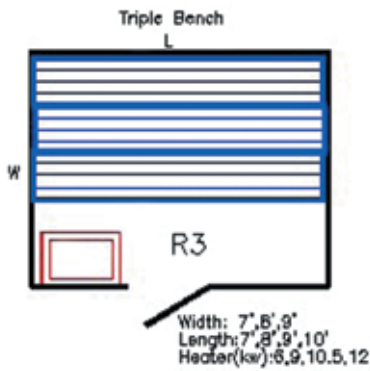
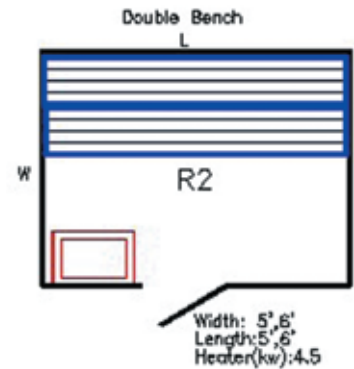
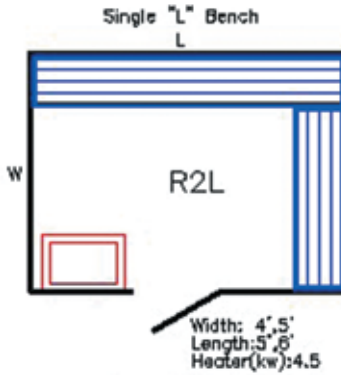
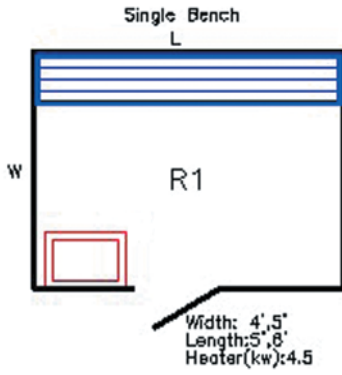
Backrest



Legs



SERENA SAUNA TYPICAL LAYOUTS



SERENA PREMIUM PRE-CUT CEDAR SAUNA PRICE LIST

FEATURES

- ◆ Walls & ceiling 1x4 clear western red Cedar 1 1/16" thick, kiln-dried.
- ◆ V-joint T&G, pre-sanded.
- ◆ Foiled vapor barrier.
- ◆ Door with Glass Window and Door Jamb.
- ◆ 2x4 western red Cedar, pre-sanded, for one or two level straight or L-shaped benches, bracing and bench supports.
- ◆ Sauna heater with controls and rocks.
- ◆ 1x4 Floor, duck board on walking area.
- ◆ 1x4 Heater guard.
- ◆ Vapor proof marine light.
- ◆ Galvanized nails and screws.

SIZE	LIST PRICE	NO. OF BENCHES	HEATER (KW)	LAYOUT
4' x 4' x 7'	\$4,065.00	1	3	R1
4' x 5' x 7'	\$4,280.00	1	3	R1
4' x 6' x 7'	\$4,550.00	1	4	R1
5' x 6' x 7'	\$4,770.00	1	4	R1
5' x 7' x 7'	\$5,190.00	2	5	R2, R2L
6' x 7' x 7'	\$5,685.00	3	6	R3, R3C, R3L
6' x 8' x 7'	\$6,160.00	4	7.5	R4C, R4L
7' x 8' x 7'	\$6,440.00	4	7.5	R4C, R4L
7' x 9' x 7'	\$6,860.00	4	9	R4C, R4L
8' x 8' x 7'	\$6,996.00	4	9	R4C, R4L
8' x 9' x 7'	\$7,660.00	4	10.5	R4C, R4L
8' x 10' x 7'	\$8,010.00	4	10.5	R4C, R4L
10' x 10' x 7'	\$9,585.00	4	12	R4C, R4L

SERENA EXECUTIVE CEDAR LOG SAUNA PRICE LIST

FEATURES

Commercial and Residential Cedar log sauna rooms are custom designed to suit any requirement.

- ◆ Made from grade A+ kiln dried clear red western Cedar.
- ◆ Comes complete and ready to assemble – double tongue and groove 2 x 4 construction. No studding vapor barrier or insulation required.
- ◆ Dowel lock system for corner joints provides structural strength and a proper seal without using nails or glue.
- ◆ Fast and easy to assemble.
- ◆ Comes complete with walls, ceiling, door with glass window, benches, duckboard floor, heater guard, vapour proof marine light, sauna heater with timer, thermostat, and rocks.

SIZE	LIST PRICE	NO. OF BENCHES	HEATER (KW)	LAYOUT
4' x 4' x 7'	\$6,015.00	1	3	R1
4' x 5' x 7'	\$6,405.00	1	3	R1
4' x 6' x 7'	\$6,850.00	1	4	R1
5' x 6' x 7'	\$7,265.00	1	4	R1
5' x 7' x 7'	\$8,315.00	2	5	R2, R2L
6' x 7' x 7'	\$9,010.00	3	6	R3, R3C, R3L
6' x 8' x 7'	\$9,675.00	4	7.5	R4C, R4L
7' x 8' x 7'	\$10,170.00	4	7.5	R4C, R4L
7' x 9' x 7'	\$11,190.00	4	9	R4C, R4L
8' x 8' x 7'	\$11,335.00	4	9	R4C, R4L
8' x 9' x 7'	\$12,210.00	4	10.5	R4C, R4L
8' x 10' x 7'	\$12,775.00	4	10.5	R4C, R4L
10' x 10' x 7'	\$15,307.00	4	12	R4C, R4L

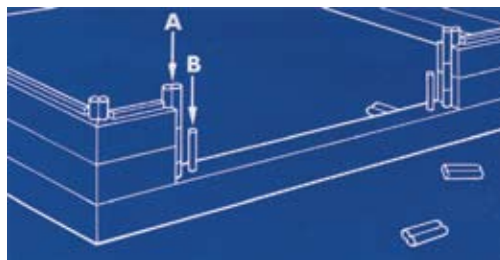
SERENA CEDAR LOG SAUNA ASSEMBLY INSTRUCTIONS

Serena Cedar log sauna built to your specifications, comes with step-by-step instructions.

Now you can build your own log sauna from our pre-fabricated Do-it-yourself kit, thanks to the revolutionary Dowel-lock system. No nails, no glue.

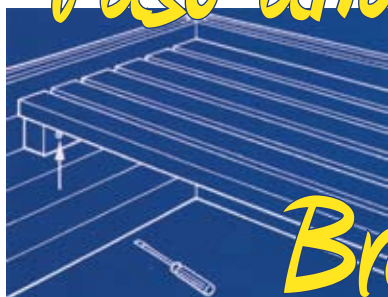


1. Select the four marked base logs from the package, set them together as shown above and push down a Dowel-lock tie in each corner, layer by layer.

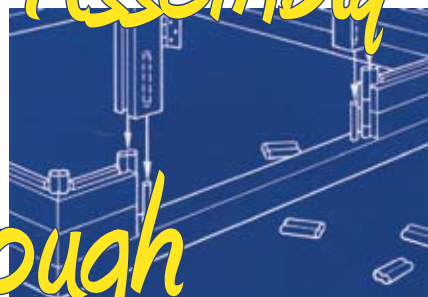


2. Each layer is done exactly the same. A and B indicate position for the ties and dowels in readiness for door posts.

Fast and Easy Assembly
Breakthrough



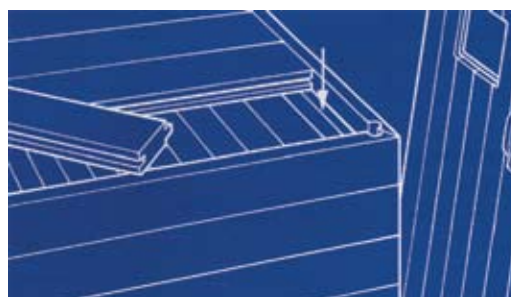
4. The bench is pre-drilled. All you need is to screw driver to attach it to the log wall.



3. The door posts are marked. Set them in place as shown above, at about the third or fourth layer of logs.



5. Place the pre-drilled log above the door and build to final height.



6. Ceiling planks rest on the top logs, which have rebated steps. The pre-assembled door comes ready to hang.

SAUNA HEATERS FEATURES

- ❖ Energy efficient - Designed to heat the sauna room, not the heater itself.
- ❖ Safety – 100% stainless steel construction, the body of the heater runs cooler than any other heater, very safe for sauna bathers.
- ❖ Durability – Very low density incoloy silver soldered heating elements with little radiant heat are used. The lower the density, the longer the life of the heaters.
- ❖ Comfort – User friendly programmable digital control, easy to operate

Serena Sauna Heaters



Wall Mount



Floor Mount

Harvia



Wall Mount

SAUNA HEATERS PRICE LIST

MODEL NO.	KW MAX	CU. FT. RANGE	VOLTS	PHASE	AMPS	DIMENSION D X W X H	STANDARD UNIT PRICE
SSH 5	5	250	240	1	21	12" x 18" x 27.5"	\$860.00
SSH 6	6	300	240	1	25	12" x 18" x 27.5"	\$930.00
SSH 7.5	7.5	375	240/208	1/3	32/21	12" x 18" x 27.5"	\$1115.00
SSH 9	9	450	240/208	1/3	38/25	12" x 18" x 27.5"	\$1135.00
SSH 10.5	10.5	525	240/208	1/3	44/30	12" x 18" x 27.5"	\$1,525.00
SF 9	9	450	240/208	1/3	38/25	21" x 31" x 19"	\$1,525.00
SF 10.5	10.5	525	240/208	1/3	44/30	21" x 31" x 19"	\$1,870.00
SF 12	12	600	240/208	1/3	50/33	21" x 31" x 19"	\$1,910.00
SF 15	15	750	208	3	42	21" x 31" x 19"	\$2,225.00
SF 18	18	900	208	3	50	21" x 31" x 19"	\$2,710.00
SF 21	21	1050	208	3	59	21" x 31" x 19"	\$3,305.00

SAUNA CONTROL PACKAGE

60 Min Mechanical Control

included



- ◆ Mechanical thermostat with 12 ft. capillary sensor.
- ◆ (10°C/50°F - 90°C/190°F).
- ◆ 60 minute timer (0 -60min.).
- ◆ Indicator light.
- ◆ Stainless steel cover plate.

Advance Blue Designer Digital Timer/Temp Control

\$485.00 extra



- Chrome & silver trim in blue appearance.
- Chrome, brushed nickel, brass, and gold trim in beige appearance.

The control can be installed outside/inside sauna to control the time and temperature of the rooms. It stores 2 temperature setpoints and 4 time settings. Comes with a standard 15 ft connector cable and 20 ft sensor cable (extendable). To extend up to 50 ft, use RG3, RG5 cables or any 2 pairs cable (22 to 18 AWG).

Functions

1. Time control: 1 to 240 minutes. Preset for 4 time values; t1, t2, t3 and t4.
For example, t1=30 min, t2=45 min, t3=60min, t4=90min.
2. Temperature control: from 0° to 99°C (32° to 210°F). Preset for 2 temperatures, SP1 and SP2.
3. Temperature display: Celsius or Fahrenheit.
4. ON/OFF: Turns the unit ON or OFF at any desired time.

The values programmed by users are stored in memory in case of power outage.

Power Junction Box



Power Junction box is an electrical box which houses the electronic board that drives the controls and contactor. The main power wire is terminated in this box, and from there runs to the sauna heater unit.

SAUNA CONTROL PACKAGE

24-HR /7-Day Digital Timer



On/Off switch, 24 hour or 7-day electronic timer.

A419 Series Electronic Temperature Control



The A419 electronic temperature control is a single-stage, electronic temperature control with a single-pole, double-throw output relay. The control features a lockable, three button touch pad for setup and adjustment and a liquid crystal display (LCD) which displays the sensor temperature and other control functions. The control has a set point range of -30° to 212°F (-34° to 100°C) and is available 120/240 VAC model.

The A419 control has adjustable set point and differential, an adjustable anti-short cycle delay, and a temperature offset (setback) function. It also displays a message whenever sensor is failed.

ETC Two Stage Electronic Temperature Control



- Wide range of temperature setpoint (-30F to 220F) and differential adjustment (1F to 30F).
- Simple keypad programming of setpoint temperature, differential and heating modes.
- Two individually programmable stages.
- LCD readout of sensor temperature, control settings, relay status and onboard diagnostics.
- Remote temperature sensing up to 400 feet.
- Two SPDT output relays.
- Lockout switch to prevent tampering by unauthorized personnel.
- Operating voltage of 120V/240VAC.

ACCESSORIES

RGB LED light with housing & remote

\$155.00

The Multi-Color LED Light bulb is a super bright LED bulb that can transition through dozens of color and brightness combinations. The light is generated from a 5 Watt LED.



Ultimate Sauna Wood Cleaner & Rejuvenator

1G \$29.99
4G \$100.00



Ultimate sauna wood cleaner & rejuvenator
Professional strength 4 to 1 concentrate

Kills germs, viruses, mildew and fungus on wood. Ensures hygiene. Removes and prevents perspiration condensate, freshens and deodorizes sauna. Revitalizes and rejuvenates your sauna.

Towel Warmers

Model	Dimension	Frame	Power	Voltage	Style	Price
TWA Series	925x600 mm	304 Stainless Steel/Polish	150W	120V	Straight Tube	\$280.00
TWB Series	800x600 mm	304 Stainless Steel/Chrome	150W	120V	Curved Tube	\$220.00



ACCESSORIES



Backrest
\$24/ft



Headrest
\$32.99



Bench
\$80/ft



Bench
\$415.00



Bucket & Ladle
\$59.99



Brush
\$14.99



Air Exhaust Wood Louver
\$29.99



Air Intake Metal Louver
\$14.99



Sauna Sign 12" x 18"
\$29.99



Towel Hook
\$19.99



Door Handles
(pair)
\$16.99



Sauna
Wood Preserve
\$59.99



Fragrance (concentrate)
\$18.00/30ml
\$55.00/500ml
\$255/1G



Thermo-Hygrometer
\$29.99



Painted Aluminium
Thermometer
\$11.99



Thermometer
\$80.00

ACCESSORIES



Sand Timer
\$34.99



Sauna Clock
\$64.99



Sauna Light
\$29.99



Sauna Light
\$29.99

Alarm System \$325.00



Fixed Alarm Heat
Detector 200°F



Push Button

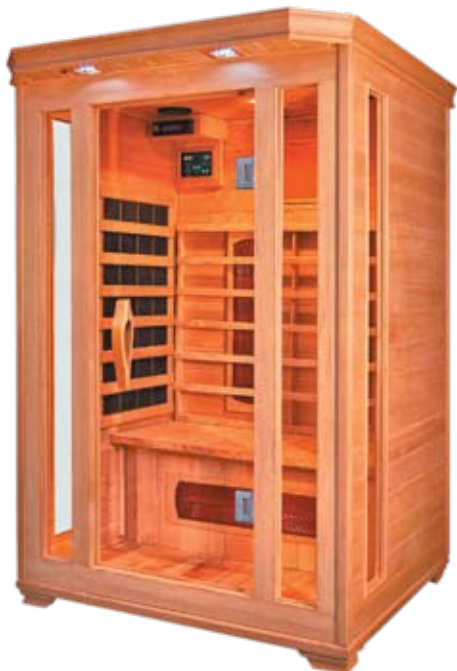


Emergency Stop
\$90

Accessories Price List

Air Intake Metal Louver 6"x10"	\$14.99	Round Thermo-Hygrometer	\$29.99
Air Exhaust Wood Louver 3"x10"	\$29.99	RGB High Power LED Light with housing & remote	\$155.00
Alarm System	\$325.00	Sand Timer	\$34.99
Backrest	\$24.00/ft	Sauna Clock	\$64.99
Bucket & Ladle	\$59.99	Sauna Light	\$29.99
Brush	\$14.99	Sauna Sign 18"x12"	\$29.99
Corner Bench	\$415.00	Sauna Wood Preserve	\$59.99
Door Handle (pair)	\$16.99	Stainless Steel Towel Warmer	\$420.00
30ml Fragrance (concentrate)	\$18.00	Towel Hook	\$17.99
500 ml Fragrance (concentrate)	\$55.00	Ultimate Sauna Wood Cleaner & Rejuvenator (1G)	\$29.99
1G Fragrance (concentrate)	\$250.00	Ultimate Sauna Wood Cleaner & Rejuvenator (4G)	\$100.00
Headrest	\$32.99		
Painted Aluminium Thermometer	\$11.99		
Rectangle Bench	\$80/ft		

SERENA INFRARED SAUNA



*Pursue A New
Modern Lifestyle -
Serena Infrared
Health Sauna*

Features

Model	SSI-33	SSI-44	SSI -45	SSI-46
Dimension	33" x 34" x 75"	44" x 49" x 75"	48" x 60" x 75"	48" x 72" x 75"
Capacity	1~2 person	2 person	2~3 person	4 person
Volts/Amps	120V /10A	120V /14A	120V /16A	240V /10A
Wattage	1100W	1600W	1900W	2150W
Heaters	3	5	6	7
Temperature	75°F -150°F	75°F -150°F	75°F -150°F	75°F -150°F
Digital Control	Dual system	Dual system	Dual system	Dual system
CD Player	Yes	Yes	Yes	Yes
Speakers	Yes	Yes	Yes	Yes
Weight	230lbs	275lbs	338lbs	375lbs
Warranty	1 year Limited	1 year Limited	1 year Limited	1 year Limited

SERENA INFRARED SAUNA SPECIFICATION SHEET

Brand Name	Serena Series Infrared Sauna
Models	SSI – 33, SSI – 44, SSI – 45, SSI - 46
Benefits	<ul style="list-style-type: none">• Removes harmful toxins and heavy metals stored in the body.• Burns calories and control weight, burn up to 600 calories in 25 minutes session.• Beautifies the skin, improves skin tone and removes cellulite.• Reduces stress, and promotes better sleep.• Relieves aching muscles; relieves pains from arthritis, sprains.• Increases circulation and oxygen supply to the tissues.• Boosts immune and cardiovascular systems.• Strengthen heart rate; helps to stabilize blood pressure.• Slows down the aging process.
Advantages	<ul style="list-style-type: none">• Plugs in directly to 15 amp or 20 amp 120 volt power wall outlet, no wiring required.• Digital temperature & time controller.• External & internal dual control system.• CD music player with speakers.• Internal lighting.• A safety warning plate on the left front wall inside the room.
Sauna Room	<ul style="list-style-type: none">• Only 9-pc easy to assemble panels.• Comfort bench widened to 21.5".• Designer back rest, it is more ergonomic comfortable.• Door with large window.• Fir wood inside & out.• Thoughtful pedestal protects the sauna room from eroding by wet ground.• There are clips only seen at bottom.• The appearance is more luxury and beautiful.
Components	<ul style="list-style-type: none">• Wood sauna cabin.• Ceramic infrared heating tubes.• Microcarbon Heater.• CD player w/speakers.• Instruction manuals.• Wrench and screwdriver.

TERMS AND CONDITIONS

These terms and conditions apply to all goods or services Steam Sauna Inc. provides. Steam Sauna Inc. recognizes no other terms and conditions. Steam Sauna Inc. rejects all additional terms and conditions that may be contained in any document provided previously or subsequently by your company.

1. ORDERS:

All orders are subject to acceptance by the manufacturer. No production will begin until receipt of purchaser's signed order and credit approval.

2. PACKAGING:

No charge will be made for packaging for shipments to Canada or the United States but a charge equal to 5% of the net price will be added for packing for export shipping outside these areas. Charges for any special packing required will be quoted accordingly.

3. PRICES:

List prices shown in the catalog exclude all applicable taxes, duties, shipping, installation or job supervision charges. Prices are subject to change without notice and will be applied at the time of shipping.

4. TAXES:

If taxes are not included in the price, then all applicable taxes will be added to price and paid by the purchaser.

5. LOCAL CODES:

Steam Sauna Inc. does not assume responsibility or cost of field changes to its products to meet local or state codes. We will be glad to quote for any requested requirements.

6. FREIGHT/SHIPPING TERMS:

FOB WORKS NO FREIGHT ALLOWED. All charges for shipping or unloading to job sites are at the Purchaser's expense, unless otherwise stated and therefore approved by Steam Sauna Inc. If, for any reason or cause whatsoever, transportation of goods will not be accepted by the receiver or the appropriate public transporter, all additional charges incurred will be at the expense of the Purchaser and delivery will be deemed to the Purchaser. If routing of shipment is specified on the Purchaser's order, it will be followed whenever practicable, otherwise routing is subject to Steam Sauna Inc's discretion.

7. PAYMENT:

30% of total charges must be paid up on Order Acknowledgement and remaining 70% before shipping. If Purchaser choose the "net 30 days" payment, an additional \$60.00 credit approval fee will be added to total. For payment terms longer than 30 days, additional 2% will be charged to the remaining balance up to due date. 30 days is counted from the date of invoice (not date of arrival of goods). Payment in full without retainer and/or any unauthorized sums deducted is expected. A service charge of 2% per month will be charged to all past due accounts. All outstanding accounts will become immediately due and payable. At any time, Steam Sauna Inc may change, or modify the period of payment or may require full/partial payment before assembling or shipping the goods.

8. TITLE:

Title to all goods shall remain in Steam Sauna Inc and at the Purchaser's risk until fully paid for.

9. CLAIMS:

Title passes to the Purchaser upon delivery to the carrier, subject to full payment received, unless otherwise indicated. Safe delivery is the responsibility of the carrier. The receiver must make all damaged claims at time of delivery or immediately after receiving the goods with the shipping company. Damaged merchandise, if accepted, should be noted on the delivery receipt and on the freight bill before acceptance of shipment. Make a claim promptly.

10. RETURNS:

ALL ITEMS ARE NON-REFUNDABLE OR EXCHANGEABLE. No goods will be accepted for return without a return authorized number from the manufacturer. All transportation charges must be borne by the Purchaser. New and unused goods of current design accepted by Steam Sauna Inc. for credit are subject to restocking charge of at least 25% of the invoice value of the goods. Further deductions will be made if goods returned are in a depreciated condition, damaged, or if re-crating or packaging is necessary. No returns allowed on sauna log rooms.

11. CANCELLATIONS OR CHANGES:

No orders or sales may be cancelled or changed without the consent of Steam Sauna Inc. Changes made after fabrication has begun shall be submitted in writing signed by the purchaser. Purchaser agrees to pay the cost of any changes. Cancelled orders are subject to payment of cancellation charges equal to all costs incurred by Steam Sauna Inc up to the date of cancellation, including a 5% allowance for overhead.

12. WARRANTY:

Each product is warranted by terms and conditions stated in the "Warranty Card" that is attached to its manual. Steam Sauna Inc may agree to extend the length of warranty, but the terms & conditions will remain unchanged.

13. RISK:

All goods shall be deemed shipped or delivered to Purchaser at the time they are placed in the hands of a carrier for delivery to the Purchaser or to his order and all responsibility for loss, damage or destruction of any said goods is thereupon assumed by the Purchaser. It is understood and agreed that Steam Sauna Inc shall not be liable for any delay in shipping or delivery of goods for any cause whatsoever.

14. CONTINGENCY:

All contracts are contingent upon fire, strikes, accidents, delays in transit, acts of God or other causes beyond our control.



Bellagio Hotel



Burj Al Arab



The Westin Hotel

Client Overview

**YMCA
World Gym
Power House Gym
Nautilus Fitness
Beverly Hills Country
Club**



The Venetian Hotel



Sandals Resort



Walt Disney World

**Heaven on the Earth
Spa
Danger Figure Spa**



Gold's Gym



**Michigan State
University**



Bally Total Fitness

**Omni Resort Hotel
Ritz-Carlton Hotel
Park Hyatt Hotel
Crown Plaza Hotel
Radisson Hotel
Marriott Hotel
Sheraton
Mandalay Bay Resort**



**New York Country
Club**



The Elmwood Spa



**Hillcrest Park
Recreation Centre -
Olympics 2010**

**Iowa State University
Georgian College
St. Mary's Memorial
Hospital**

many more...



**www.steam-sauna.com
sales@steam-sauna.com
Toll Free: (800) 354-8462 Fax: (716) 838-6600
Lewiston New York ♦ Toronto Ontario**

